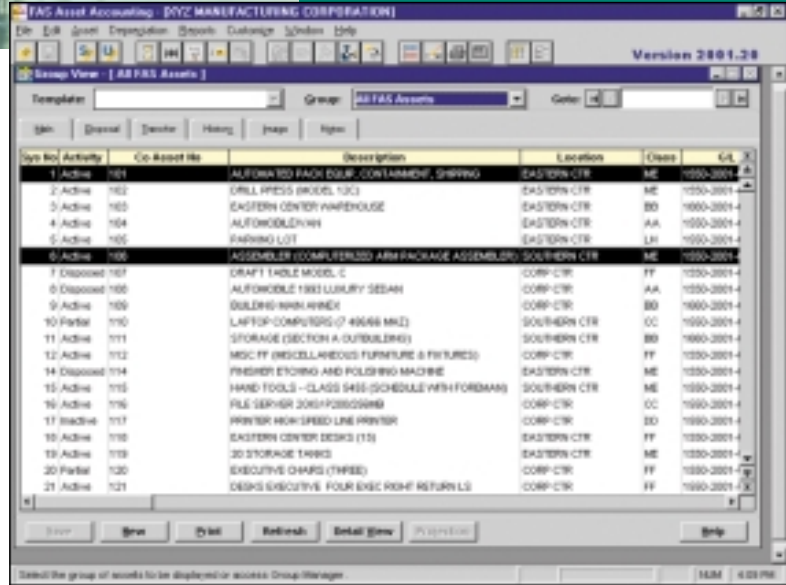




# Asset Accounting Powered by FAS



## MAS 90

## MAS 200

Client/Server

Client/Server for SQL Server

### FIXED ASSET MANAGEMENT

- Partial and whole transfers and disposals
- Merge and extract companies
- Fully customizable and automatic
- Password security
- Windows 98/NT compatible

Asset Accounting Powered by FAS is available with or without the FAS Report Writer for developing custom reports.

In larger or decentralized organizations, fixed asset management can pose complex challenges in administration, access, user-specific customization and system security. Compatibility with existing accounting software and the client/server environment can be of equal concern.

The Asset Accounting system Powered by FAS has become the Windows-based fixed asset management software of choice for capability and versatility in small to medium-sized companies. It combines the acknowledged depreciation expertise and user friendliness of FAS with the added power and functionality your situation demands. It was developed to meet the needs of your business, providing fast, dependable, customizable fixed asset management performance and data security.

Asset Accounting Powered by FAS provides the additional ability to execute partial and whole transfers and disposals, conduct bulk disposals with automatic gain/loss calculations and track transfer activity with as little as a single keystroke.

Plus, it provides extra security features at the system level, company level and user-defined menu levels, as well as fully controlled access to predefined SmartLists. Finally, Asset Accounting Powered by FAS integrates with MAS 90 and MAS 200 through the FAS Link, creating a powerful, reliable, easy-to-use, and secure accounting management system for your entire organization.

See reverse side for list of features

# MAS 90 and MAS 200

## Asset Accounting Powered by FAS



### FEATURES

|                               |                                                                                                                                                                                                                                                                                                                                                                                                                                                                                                                                                    |
|-------------------------------|----------------------------------------------------------------------------------------------------------------------------------------------------------------------------------------------------------------------------------------------------------------------------------------------------------------------------------------------------------------------------------------------------------------------------------------------------------------------------------------------------------------------------------------------------|
| Transfers and Disposals       | With Asset Accounting Powered by FAS, you can execute partial and whole asset transfers and disposals individually to user-defined depreciation schedules. For bulk disposals, the system also automatically calculates gain/loss on individual assets.                                                                                                                                                                                                                                                                                            |
| Group Manager                 | Group Manager lets you define groups of assets as you go. Definitions can be based on any characteristic including type, location, custodian and acquisition date. Depreciation, reporting, location change and disposal require only a few keystrokes to implement.                                                                                                                                                                                                                                                                               |
| Asset Views                   | Asset Detail View allows you to view all details of a single asset from all seven books on a single screen. In Asset Group View, you can work with and view multiple assets simultaneously.                                                                                                                                                                                                                                                                                                                                                        |
| Asset Images                  | Pictures of an asset, purchase order, maintenance agreement, warranty, invoice and other documentation can be scanned into the file and viewed on screen at any time, providing a complete and readily accessible record of all the asset data.                                                                                                                                                                                                                                                                                                    |
| Asset Navigation and History  | In addition to the system's powerful query capabilities, it provides instant switching between Main and Disposal functions, a complete audit trail of the major events in an asset's life, and the facility for attaching notes to record important details.                                                                                                                                                                                                                                                                                       |
| Extended Fields               | Description fields can be up to 80 characters in length, and extended user fields can accommodate up to 25 characters, affording optimal space for easy and complete asset definition. Up to 100 characters can be entered for general ledger account numbers.                                                                                                                                                                                                                                                                                     |
| Automatic Calculations        | Asset Accounting Powered by FAS automatically creates AMT and ACE schedules using your choice of more than 20 methods of depreciation including MACRS 150% and 200%, ACRS, Straight Line, Modified Straight Line, Declining Balance and Sum-of-the-Years Digits. Other automatic calculations available range from Full Month Convention, Mid Quarter Convention and Half Year Convention to Section 179, ITC, Gain/Loss, Salvage Value and Tax Preference Amounts. It also provides the flexibility to create customized methods in each company. |
| Custom Report Writer          | More than 20 standard reports are available, each allowing user-defined sort and range criteria on all fields. You can also create custom reports with built-in report helpers, produce custom consolidated reports that let you "roll up" data without changing the underlying database and specify totals-only reporting for standard reports.                                                                                                                                                                                                   |
| Extra Security                | The application can assure complete security at user, user-defined menu, system and company levels, protecting important or proprietary data from unauthorized access or manipulation. This security feature also includes fully controlled access to predefined SmartLists for fewer data entry errors.                                                                                                                                                                                                                                           |
| Windows Compatible            | It is compatible with Windows and Windows NT. The system also imports from a wide range of popular Windows applications including Microsoft Excel, and Lotus 1-2-3.                                                                                                                                                                                                                                                                                                                                                                                |
| MAS 90 and MAS 200 Compatible | Asset Accounting Powered by FAS integrates with the MAS 90 and MAS 200 core programs for comprehensive accounting management performance.                                                                                                                                                                                                                                                                                                                                                                                                          |
| Online Help                   | Instant context-sensitive online help is always available. Furthermore, customizable Help for online corporate guidelines can be easily added.                                                                                                                                                                                                                                                                                                                                                                                                     |
| Technical Support and Updates | A FAS SupportPlus membership provides access to toll-free phone assistance, automatic free system enhancements and updates, automatic tax law updates, 24-hour access to FAS SupportPlus Online and a wide array of other privileges and value-added benefits.                                                                                                                                                                                                                                                                                     |