

# best



## Timeslips Link

### MAS 90

### MAS 200

Client/Server

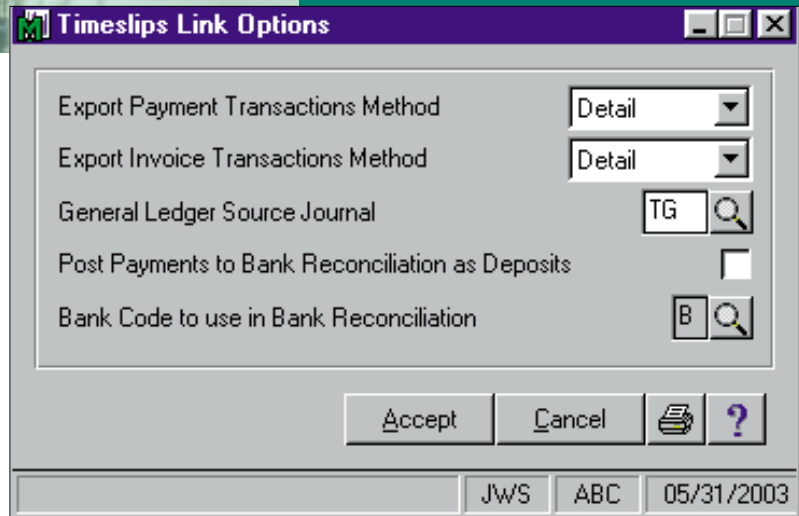
Client/Server for SQL Server

### MAS 90 and MAS 200 Reports:

- Timeslips Transaction Register

### Timeslips Reports:

- Fee Allocation
- Overhead Cost
- Flat Fee Performance
- Open Invoice
- Payment Performance
- Client Statements
- Tax Collection Summary
- Aged Work-in-Progress
- Time Analysis
- Productivity Analysis
- Profitability Analysis
- Budget to Actual
- Accounts Receivable
- Charges on Hold



Timeslips, the award-winning, best-selling, time and billing program, is the perfect business management tool for any service-oriented business. With its numerous features, it has become the standard, full-featured time and billing software for all professionals — lawyers, accountants, consultants, graphic designers, architects and many others — who need to track their time and bill for it.

Timeslips features include precise time and expense tracking (thanks to its built-in stopwatch timer), versatile invoicing capabilities that include a variety of billing methods, and fully customizable bill formatting and reporting that is designed to help you manage your business more profitably.

The Timeslips Link provides the necessary import and export capabilities to post general ledger transactions from Timeslips to the MAS 90 or MAS 200 General Ledger module. To facilitate setup, the chart of accounts information is exported from MAS 90 or MAS 200, then assigned to accounts in Timeslips. When the customer desires, general ledger transaction entries are exported from Timeslips to the application. This systematic flow of information can save time, eliminate errors and allow you to get the best of both worlds: the most popular time and billing software available today, teamed with the uncompromising quality of the MAS 90 and MAS 200 product lines.

*See reverse side for list of features*

## FEATURES

### Timeslips Link Features

|                             |   |
|-----------------------------|---|
| Export Chart of Accounts    | The MAS 90 and MAS 200 General Ledger chart of accounts can be exported into Timeslips, to eliminate repetitive data entry. |
| Multiple Import Formats     | General ledger transactions can be imported from Timeslips Link in summary or detail.                                       |
| Updates Bank Reconciliation | Client payments can be posted to Bank Reconciliation as deposits.   |
| Audit Capabilities          | The Timeslips Link Transaction Register is printed before the information is updated to the General Ledger module.          |

### Timeslips Features

Over 80 reports including:

|                        |   |
|------------------------|---|
| Overhead Cost          | Compares employees' hourly values against billings.   |
| Flat Fee Performance   | Shows gain or loss when using flat fees.  |
| Invoice                | Shows amounts billed, paid and unpaid fees, costs and interest for each invoice.                    |
| Payment                | Helps determine how payments are apportioned to each timekeeper.                                    |
| Performance            | Payments are assigned to timekeepers according to their associated billings across various periods. |
| Tax Collection Summary | Provides an analysis of how much was billed and paid for within each tax rate.                      |
| Aged Work-in-Progress  | Shows status of each client's unbilled charges.   |